



Face-to-Face with the Future...

未来 • 与你面对面

2011 China Annual Conference for International Education
China Education Expo 2011

15-30 October, 2011

Beijing, Qingdao, Xi'an, Shanghai, Wuhan, Chengdu, Guangzhou

www.ChinaEducationExpo.com



批准单位/Approved by:



中华人民共和国教育部
Ministry of Education, PRC

主办单位/Sponsored by:



中国教育国际交流协会
China Education Association
for International Exchange



Face-to-Face with the Future...

未来 • 与你面对面

2011 Exhibition Tour 巡回展览

10.15-16 Beijing ●

15-16 October, 2011 (Saturday-Sunday) 9:00-16:00
China World Exhibition Hall, Beijing
2011年10月15日至16日 (周六-周日) 9:00-16:00
北京国贸展厅

10.18 Qingdao ●

18 October, 2011 (Tuesday) 13:00-17:00
Shangri-La Hotel Qingdao
2011年10月18日 (周二) 13:00-17:00
青岛香格里拉大酒店

10.20 Xi'an ●

20 October, 2011 (Thursday) 13:00-17:00
Shangri-La Hotel Xi'an
2011年10月20日 (周四) 13:00-17:00
西安香格里拉大酒店

10.22-23 Shanghai ●

22-23 October, 2011 (Saturday-Sunday) 10:00-16:00
Shanghai East Asia Exhibition Hall
2011年10月22日至23日 (周六-周日) 10:00-16:00
上海东亚展览馆

10.25 Wuhan ●

25 October, 2011 (Tuesday) 13:00-17:00
Shangri-La Hotel Wuhan
2011年10月25日 (周二) 13:00-17:00
武汉香格里拉大酒店

10.27 Chengdu ●

27 October, 2011 (Thursday) 13:00-17:00
Shangri-La Hotel Chengdu
2011年10月27日 (周四) 13:00-17:00
成都香格里拉大酒店

10.29-30 Guangzhou ●

29-30 October, 2011 (Saturday - Sunday) 13:00-17:00
Guangzhou Dongfang Hotel
2011年10月29日至30日 (周六-周日) 13:00-17:00
广州东方宾馆

Face-to-Face Networking Opportunities in 7 Cities of China

Tens of thousands of visitors will meet face-to-face with school representatives in Beijing, Qingdao, Xi'an, Shanghai, Wuhan, Chengdu and Guangzhou from 15 – 30 October, 2011

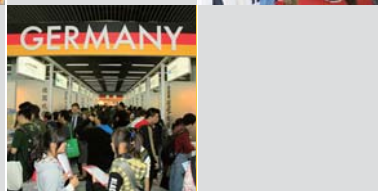
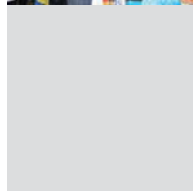
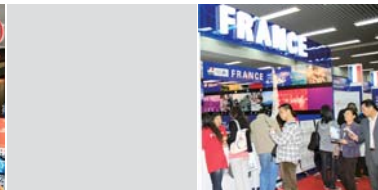


China Education Expo 2011, the 12th edition, will serve overseas schools for:

- Brand building with visibility
- Liaison with quality students
- Insight and inspiration from the field trip
- Exceptional face-to-face connections

Face-to-Face Connections Will Make Your Vision Real...

Tens of thousands of visitors are expecting you as our 2010 surveys showed: last year 62,000 visitors attended China Education Expo 2010 in six cities.



Two-thirds of visitors in Beijing and Shanghai came to meet and interact directly with schools for the quality information.

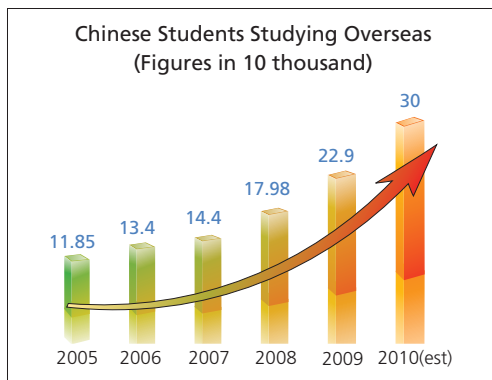


Two-thirds of visitors in Beijing and Shanghai were ready to go abroad in one to two years time by choosing directly contacting with schools.



The Landmark Event Looks to Future

Official statistics showed that some 179,800 students went abroad in 2008, the number topped over 229,000 in 2009, an annual increase of about 27%, some 300,000 is estimated in 2010. It is expected that the number will continue to rise in 2011.



Source: Ministry of Education, PR China

Participation Guidelines

- Only regionally accredited overseas academic institutions are accepted at China Education Expo 2011.
- Institutions shall only be represented by authorized personnel (faculty professor, advisor, lecturer, or recruitment officer) from the institutions themselves.
- As we promote direct communication between overseas schools with Chinese students, no third party recruiters or agents or domestic language training organizations or Alumni running agency business, will be accepted at China Education Expo 2011.

Overseas Exhibitor's Profile

- National pavilions
- Regionally recognized overseas schools, colleges, and universities
- Regionally recognized overseas vocational education schools
- Regionally recognized overseas language training schools and institutions
- Governmental organizations
- Embassies and consulates
- Student services providers (banking, accommodations & airlines, etc.)

Participation

● Standard Booth

Beijing, Shanghai and Guangzhou: 3m x 2.5m
Qingdao, Xi'an, Wuhan and Chengdu: 3m x 2m

The basic fittings shall include:

- Fascia board with exhibitor's E/C names
- Aluminum frame system, white plywood panel walls (2500mmH) on all closed sides of the booth
- Booth fully carpeted
- 4 folding chairs
- 1 single-phase socket (220V/5A)
- 2 information counters
- 2 lights
- 1 waste basket

For rates and details, please refer to the Booth Application Form.

● Space Only

Space Only is available with minimum size of 4 standard booths. Exhibitors will design and build their own booths at their cost with the assistance of our official booth contractor.

● Seminar

Cost: RMB4,000 per session

Inclusive of 30 minutes duration, a 50-people capacity seminar room, laptop, AV equipment and multi-media projector, audience promotion.

More updated information and services will be available on the official website: www.ChinaEducationExpo.com



Show Management Office

Fairlink Exhibition Services Ltd.

Add : Rm. 1105, Tower B, SOHO New Town, No. 88 Jianguo Road, Chaoyang District, Beijing 100022, China

Tel : +86-(0)10 8580 0790/91/92

Fax : +86-(0)10 8580 0786

E-mail : Lily@fairlink.com.cn / HD@fairlink.com.cn

Contact : Ms. Lily ZOU / Mr. Harden DANG